



ARROWHEAD ALARM PRODUCTS

Arrowhead Alarm Products Ltd



ISSUE 13

CATALOGUE

344b Rosedale rd, Albany, Auckland, NZ
ph. 09-414-0085 fax. 09-414-0088

www.aap.co.nz



SECTION-1	ALARM KITS	1
SECTION-2	ALARM PANELS	2
SECTION-3	ALARM KEYPADS	3
SECTION-4	ALARM PANEL ACCESSORIES	4
SECTION-5	PIEZO, STROBE AND SIRENS	5
SECTION-6	INDOOR DETECTION DEVICES	6
SECTION-7	OUTDOOR DETECTION	7
SECTION-8	GLASSBREAK/SEISMIC DETECTORS	8
SECTION-9	MICROWAVE DETECTORS	9
SECTION-10	REID SWITCHES	10
SECTION-11	WIRELESS DETECTORS	11
SECTION-12	PENDANTS/TRANSMITTERS	12
SECTION-13	RADIO RECEIVERS AND DECODERS	13
SECTION-14	ELSEMA WIRELESS	14
SECTION-15	MONITORING AND CELLULAR	15
SECTION-16	MEDICAL & EMERGENCY	16
SECTION-17	ACCESS CONTROL & INTERCOMS	17
SECTION-18	GATE AUTOMATION	18
SECTION-19	FIRE ACCESSORIES	19
SECTION-20	BATTERIES	20
SECTION-21	CABLE	21
SECTION-22	CONTROL, RELAYS AND TIMERS	22
SECTION-23	LENSES AND BRACKETS	23
SECTION-24	PLASTIC ENCLOSURES	24
SECTION-25	PLUG PACKS	25
SECTION-26	POWER SUPPLIES 12VDC	26
SECTION-27	POWER SUPPLIES 24VAC	27
SECTION-28	POWER SUPPLIES 24VDC	28
SECTION-29	TOOLS	29
SECTION-30	CCTV	30

ESL KIT'S

KIT INCLUDES:

- ELITE S LITE CONTROL PANEL
- PLAS CABINET WITH TRANSFORMER
- 2 SWAN QUAD PET IMMUNE PIR'S
- SS-1C EXTERNAL SIREN
- PS209R INTERNAL SIREN
- 100 METER BOX OF 4 CORE CABLE
- 7.5 A/H 12VOLT SLA BATTERY
- SIMPLE INSTALLATION GUIDE
- PLUS THE KEYPAD YOU SELECT



ESL KIT-1

Full Alarm Kit
comes with: E16LED KP
+ALL KIT ITEMS LISTED ABOVE



ESL KIT-2

Full Alarm Kit
comes with: KP-LED-OEM ST
+ALL KIT ITEMS LISTED ABOVE



ESL KIT-3

Full Alarm Kit
comes with: ELITE S LCDKP
+ALL KIT ITEMS LISTED ABOVE



ESL KIT-4

Full Alarm Kit
comes with: KP-LCD-ST7OEM
+ALL KIT ITEMS LISTED ABOVE



ESL KIT-6

Full Alarm Kit
comes with: KP-ICON
+ALL KIT ITEMS LISTED ABOVE



ESL KIT-7

Full Alarm Kit
comes with: KP-ICON-OEM
+ALL KIT ITEMS LISTED ABOVE



ESL TRX KIT

KIT INCLUDES:

- ELITE S LITE CONTROL PANEL
- PLAS CABINET WITH TRANSFORMER
- TRX KEYPAD
- 2 TRX PIR's
- 2TRX PENDANT's
- TRX EXTERNAL
- TRX TRANSCEIVER
- 3A/H 12VOLT SLA BATTERY
- PS209R INTERNAL SIREN

SEE BELOW FOR YOUR CHOICE OF
POWER SOURCE FOR PANEL AND KEYPAD



ESL TRX KIT-A1

Full Wireless Alarm Kit
Powered by 230V Mains Transformer
Keypad Runs off In-wall 230V PSU



ESL TRX KIT-A2

Full Wireless Alarm Kit
Powered by 300mA Plug Pack
Keypad Runs off In-wall 230V PSU



ESL TRX KIT-B1

Full Wireless Alarm Kit
Powered by 230V Mains Transformer
Keypad Runs off In-wall C-cell Lithium



ESL TRX KIT-B2

Full Wireless Alarm Kit
Powered by 300mA Plug Pack
Keypad Runs off In-wall C-cell Lithium



ESL TRX KIT-C1

Full Wireless Alarm Kit
Powered by 230V Mains Transformer
Keypad Runs off Rechargeable Back Plate



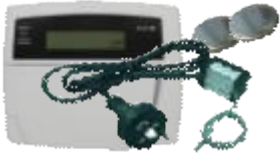
ESL TRX KIT-C2

Full Wireless Alarm Kit
Powered by 300mA Plug Pack
Keypad Runs off Rechargeable Back Plate



TRX TRANSCEIVER

When hardwired to an Elite S series control panel this board will allow all these 2-way wireless products to control and be controlled by the panel.



TRX KEYPAD-A

Full 2-way wireless LCD ICON display keypad updated from panel in real time. Run up to 8 keypads on the system. With 230V in-wall mains PSU and 2 x CR2450 Batterys



TRX KEYPAD-B

Full 2-way wireless LCD ICON display keypad updated from panel in real time. Run up to 8 keypads on the system. With C cell in-wall Battery pack



TRX KEYPAD-C

Full 2-way wireless LCD ICON display keypad updated from panel in real time. Run up to 8 keypads on the system. With Rechargeable back plate and plug pack



TRX EXTERNAL

2-way wireless external siren strobe unit. Runs up to 3 years on a single C size lithium battery. Flash lamp or chirp siren for arm & disarm indication. Fully supervised. 104dB.



TRX INTERNAL

2-way wireless internal sounder. Up to 3 years on a single C size lithium battery. Fully supervised, provide door chime from wireless call point or full alarm tones at 104dB.



TRX OUTPUT

Battery powered 2-way wireless relay output, takes commands from the Elite S to operate 2 doors or gates via key code, zone inputs, time zone or hand held transmitter.



TRX PIR

Low current 2-way wireless Swan quad element PIR detector fully supervised. Pet friendly.



TRX REED

2-way wireless reed switch for securing doors and windows. Indicates open or closed status to the control panel. Hard wired input



TRX HEAT

2-Way Wireless Heat Detector 85Db Built-in Sounder and Hush Button



TRX SMOKE

Photo electric 2-way wireless VST smoke detector, built in 85dB sounder



TRX PENDANT

Hand held 4 button 2-way wireless transmitter for arming disarming and output control. *Battery= 1 x CR2032*



TRX RM-KIT

2 x 4 Button TRX remotes and a TRX TRANSCIEVER

ELITE S LITE PANEL

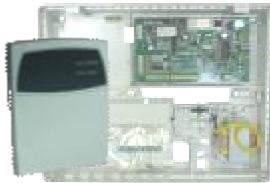


INCLUDES:
 -ELITE S LITE CONTROL PANEL
 -PLAS CABINET WITH TRANSFORMER
 -RESISTOR PACK
 -PLUS THE KEYPAD YOU SELECT



ELITE S LITE-1

comes with: E16LED KP
 +ALL ITEMS LISTED ABOVE



ELITE S LITE-2

comes with: KP-LED-OEM ST
 +ALL ITEMS LISTED ABOVE



ELITE S LITE-3

comes with: ELITE S LCDKP
 +ALL ITEMS LISTED ABOVE



ELITE S LITE-4

comes with: KP-LCD-ST7OEM
 +ALL ITEMS LISTED ABOVE



ELITE S LITE-6

comes with: KP-ICON
 +ALL ITEMS LISTED ABOVE



ELITE S LITE-7

comes with: KP-ICON-OEM
 +ALL ITEMS LISTED ABOVE



ELITE S LITE C/U

ELITE S LITE PCB IN METAL CABINET
 WITH TAMPER & NO KEYPAD
 (310x260x75)



ELITE S LITE-PCB

ELITE S LITE MANUFACTURED PCB
Zones: 4 normal EOL, 8 Zone Doubling
Outputs: 4 open collector all
customisable
Onboard Dialer and 1 Amp PSU



ELITE S C/U

COMPLETE ELITE S PANEL IN METAL
CABINET WITH TAMPER KIT
(NO KEYPAD) (310x260x75)



ELITE S PLC/U

COMPLETE ELITE S IN PLASTIC
CABINET WITH TAMPER KIT
(NO KEYPAD)



ELITE S-PCB

ELITE S PANEL MANUFACTURED
PCB Zones: 8 normal EOL, 16 Zone
Doubling
Outputs: 4 open collector, 1 Relay all
customisable
Onboard Dialer and 1 Amp PSU



ELITE 64DC/U

ELITE 64 IN A CABINET WITH
TAMPER KIT



ELITE 64-PCB

ELITE 64 MANUFACTURED PCB
Capable of having 64 Zones with
addition for 2 x Xpand-32 Modules
Outputs: 8 open collector, plus 1 relay
On-board Dialer and 1 Amp PSU



XPAND 32DC/U

COMPLETE XPAND 32 IN METAL
CABINET (NO KEYPAD)



XPAND 32-PCB

XPAND 32 MANUFACTURED PCB
32 Zone expander module for Elite-64

3 - ALARM KEYPADS



E16LED KP

GREEN LED KEYPAD

Compatible with: Elite-S, Elite-S lite,
Elite 16D v6, Elite 8D
(137 x 124 x 28)



KP-ICON

Icon LCD keypad with time and temp display

Compatible with: Elite-S, Elite-S lite
(137 x 124 x 28)



KP-LED-OEM ST

LED KEYPAD, OEM STYLE

Compatible with: Elite-S, Elite-S lite,
Elite 16D v6, Elite 8D
(134 x 88 x 24)



KP-ICON-OEM

Icon LCD keypad with time and temp display OEM STYLE

Compatible with: Elite-S, Elite-S lite,
Elite 16D v6, Elite 8D
(134 x 88 x 24)



ELITE S KP

BLUE LED KEYPAD

Compatible with: Elite-S, Elite-S lite,
Elite 16D v6, Elite 8D (137 x 124 x 28)



ELITE S LCDKP

FULL LCD KEYPAD BLUE BACKLITE

Compatible with: Elite-S, Elite-S lite
(137 x 125 x 29)



ELITE LCD-KP

LCD KEYPAD

Compatible with: Elite-64, Elite 16D v6,
Elite 8D & AC-2
(137 x 125 x 29)



KP-LCD-ST7OEM

FULL LCD KEYPAD OEM STYLE
Compatible with: Elite-S, Elite-S lite
(134 x 88 x 24)



TRX KEYPAD-A

Full 2-way wireless LCD ICON display keypad updated from panel in real time. Run up to 8 keypads on the system. With 230V in-wall mains PSU and 2 x CR2450 Batterys



TRX KEYPAD-B

Full 2-way wireless LCD ICON display keypad updated from panel in real time. Run up to 8 keypads on the system. With C cell in-wall Battery pack



TRX KEYPAD-C

Full 2-way wireless LCD ICON display keypad updated from panel in real time. Run up to 8 keypads on the system. With Rechargeable back plate and plug pack



PW READER

OUTDOOR ACCESS PROX READER WITH OUT KEYS
Compatible with: Elite-S, Elite-S lite & AC-2 (121 x 46 x 21)



PW READER 2

OUTDOOR ACCESS PROX READER WITH 2-BUTTONS
Compatible with: Elite-S, Elite-S lite & AC-2 (121 x 46 x 21)



PW READER-AAPNZ

OUTDOOR ACCESS PROX READER WITH FULL KEYPAD
Compatible with: Elite-S, Elite-S lite & AC-2 (121 x 46 x 21)



ACRYLIC PLATE

SMALL ACRYLIC PLATE FOR PW READER 10MM LASER CUT BLK
For use when mounting a PW-Reader on a Metal Surfaces



MON KEYBD-U

NIGHT ARMING STATION With Ready and Arm Status LED
Compatible with: Elite-S, Elite-S lite, Elite 16D v6, Elite 8D & Elite-64
(117 x 76 x 28)

4 - ALARM PANEL ACCESSORIES



TRX TRANSCEIVER

When hardwired to an Elite S series control panel this board will allow all these 2-way wireless products to control and be controlled by the panel.



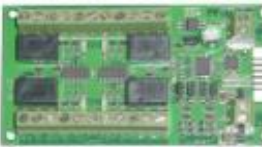
TRX RM-KIT

2 x 4 Button TRX remotes and a TRX TRANSCEIVER



TRX OUTPUT

Battery powered 2-way wireless relay output, takes commands from the Elite S to operate 2 doors or gates via key code, zone inputs, time zone or hand held transmitter.



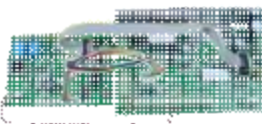
OUTPUTX4

4 X RELAY OUTPUT EXPANDER
COMPATIBLE WITH ALL ELITE
SYSTEMS & RX-OCTA (102 x 59 x 18)



IP-MODULE

Universal LAN to PSTN reporting module for monitoring over internet



IP-LOOM

Elite S to IP-Module connection cables, for IP control (setup requires advance IT knowledge)



VOICE BD STD

Record upto 240 second of audio, that can be played over the Dialler when performing domestic reporting.
Compatible with: Elite-S, Elite-S lite, Elite 16D v6, Elite 8D & Elite 64 (85 x 48 x 15)



SPEECH PROG/AU

PROGRAMMER FOR VOICE BD STD
Use this tool to record custom messages into the Voice board



VOICE BD-KIT

Great Combo Deal
kit includes: 1 x Voice BD STD
and 1 x Speech Prog/AU



RX-16 MF349

BUS CONTROLLED MULTI
FREQUENCY 303, 433 & 915MHz
RECEIVER (101 x 65 x 18)



RM-0001A KIT

2 x 4 Button 433Mhz remotes and a RX-16 MF349



RM-8003A KIT

2 x 4 Button 303Mhz remotes (no cover) and a RX-16 MF349 (101 x 65 x 18)
ALSO AVAILABLE IN 915Mhz
RM-8003B KIT



RM-8006A KIT

2 x 4 Button 303Mhz remotes and a RX-16 MF349 (101 x 65 x 18)
ALSO AVAILABLE IN 915Mhz
RM-8006B KIT



ARR14

KEYPAD BUSS LOOM 300MM
Easy fit hook up cable for keypads and radio cards



ARR15

KEYPAD BUSS LOOM 1500MM
Easy fit hook up cable for keypads and radio cards



EEPROM BD-U

UNIVERSAL DATA TRANSFER BOARD COMPATIBLE WITH ALL ELITE AND MEDICO SYSTEMS (50 x 15 x 10)



USB D-LINK

USB DIRECT CONNECT CABLE FOR ELITE SYSTEMS, COMES WITH AAP ULD SOFTWARE



MODEM 56K-P

ACTIONTEC 56K MODEM FOR REMOTE CONNECTION WITH ELITE SYSTEMS



RS232-BD

SERIAL INTERFACE BOARD TO CONNECT TO ELITE S BUSS



WEIGAND-IF

WEIGAND INTERFACE. Enables Weigand Devices to work on the Elite S panel range



DSL008 2+ ADSL

Complete ADSL 2+ Line Filter (65 x 40 x 22)



WT1020

WT1020 GSM Cellular Unit (Vodafone or 2 Degree's only) Ideal for sites without fixed telephone lines (NOT FOR PHONE LINE BACK-UP USE)



CS-47NZ

CS47 Cellular Back up Unit - Telepermit approved product (Vodafone or 2 Degree's only)



LUX

12-24V AC/DC ADJUSTABLE LIGHT LEVEL CONTROL BOARD FOR LDR WITH BUILT IN TIMER OPTION (86 x 71 x 25)



LDR SENSOR

LDR IN A PDL PLATE FOR LUX for indoor use (116 x 75 x 20)



LDR SENSOR IP65

LDR IN AN IP65 BOX FOR LUX (65 x 60 x 40)



ELITE LID

STEEL LID FOR ELITE BOX



ELITE BOX

METAL ELITE CABINET (NO LID OR TAMP BRACKET) (310 x 260 x 75)



ELITE F/KIT

FLUSH KIT FOR ELITE BOX



BOX ASS

ASSEMBLED BOX, LID, MAINS
TRANSFORMER, FUSED TERMINAL
BLOCK
(310 x 260 x 75)



ELITE TAMP KIT

ELITE RESISTOR TAMPER KIT
for Metal Cabinet



CRSHPW002

CROW PW-4/8 PLASTIC BOX
(295 X 257 X 85)



PLAS CABINET

PRE ASSEMBLED PLASTIC BOX
WITH MAINS TRANSFORMER
& TERMINAL BLOCK
(295 X 257 X 85)



PLAS TAMP KIT

Tamper Kit for Plastic Cabinet



ELITE TRANS

1.4A TRANSFORMER 17VAC



WARNING STICKR

RED/WHITE WARNING STICKER
OUTDOOR

5 - PIEZO, STROBES AND SIRENS



EK105

Top Hat Piezo 114dB (86 x 42)



EK105-2T

COMBO TOP HAT PIEZO & CHIME
WITH VARIABLE VOLUME CHIME
OUTPUT PIEZO=114dB



PS209

12v Surface Mount Internal Piezo 114dB
(54 x 47)



PS209-R

PS209 PIEZO WITH ROUND FLUSH
PLATE 114dB (76 x 59)



PS209-R2T

COMBO FLUSH MOUNT PIEZO &
CHIME. WITH VARIABLE VOLUME
CHIME OUTPUT PIEZO=114dB



PS209-F

120 DB PIEZO ON PDL STYLE FLUSH
PLATE 114dB (114 x 70 x 57)



TRX INTERNAL

2-way wireless internal sounder. Up to
3 years on a single C size lithium
battery. Fully supervised, provide door
chime from wireless call point or full
alarm tones at 104dB.



ES102

8 OHM HORN SPEAKER
requires siren driver (87 x 106)



KS50

SIREN HI POWERED



SPL-50

12V RED LED STROBE & 80dB SIREN
70mm dia.



SPL-50B

12V BLUE LED STROBE & 80dB
SIREN 70mm dia.

	LED LIGHT	RED LED LIGHT BOARD with 32 LED's
	LED LIGHT-F	FLASHING RED LED LIGHT BOARD with 32 LED's
	LED LIGHT BLUE	BLUE LED LIGHT BOARD with 32 LED's
	LED LIGHT-F BLUE	FLASHING BLUE LED LIGHT BOARD with 32 LED's
	RED LAMP ASS	Red Lamp Assembly (Comes with screws & Gasket) <i>LED board not included</i>
	BLUE LAMP ASS	Blue Lamp Assembly (Comes with screws & Gasket) <i>LED board not included</i>
	SS-1C	POLY CARB SIREN/STROBE COMPACT 114dB (200 x 114 x 65)
	TRX EXTERNAL	2-way wireless external siren strobe unit. Runs up to 3 years on a single C size lithium battery. Flash lamp or chirp siren for arm & disarm indication. Fully supervised. 104dB.
	SS-101NZ	HIGH POWER SIREN WITH BATTERY BACKUP & FLASH LIGHT Battery included
	MEB/12	(A131005) MEB/12 8-16V BUZZER (12 x 7)
	2S3120L	LEADED 9-15V PIEZO SIREN
	SIREN DRIVER	SIREN BD FOR HORN SP.
	SAT-PCB	SMD COMPLETED SAT BOARD

6 - INDOOR DETECTION DEVICES



SWAN QUAD

QUAD ELEMENT PET FRIENDLY PIR.
Also available with normally open contacts =SWAN QUAD N/O



IR80

SIEMENS 12Kg PET PIR IR80B



GENIUS 10

GENIUS DUAL PIR outdoor sensor with NO & NC contacts Perfect for harsh environments



IR100B

MIRROR OPTIC 20KG PET PIR



SWAN 1000S

SWAN 1000 MICROWAVE/PIR 9.9GHz



SWAN 1000-O

SWAN 1000 OCCUPANCY SENSOR
microwave / PIR 10.525GHz with occupancy feature for home automation



IR120C

SWISSTEC PIR 40KG PET



CRTL360

TALON 360 DEG PIR
max. height 3.6meters
max. coverage diameter 20meters

7 - OUTDOOR DETECTION



CRDDOO

DOUBLE AND DUAL O/D PIR
7.8-16VDC 15meter max.coverage



EDS-2000 DUO

QUAD PIR AND MICROWAVE
OUTDOOR SENSOR



EDS-3000 TRIO

DOUBLE QUAD PIR AND
MICROWAVE OUTDOOR SENSOR



LINEAR B

DEA 12-24vAC/DC SURFACE MOUNT
POINT TO POINT BEAM easy fix model
the IR TX unit is battery powered upto
20m IP54



104LUX

DEA ADJUSTABLE SURFACE MOUNT
POINT TO POINT BEAM upto 20m
12-24V AC/DC IP54



IR1000EXL

Reflectorised 10mtr outdoor single
beam point to point inc SS bkt
12-250V AC/DC IP66



CAB-60T

CROW 60MTR(OUTDOOR) TWIN
BEAM POINT TO POINT SET



CAB-150T

CROW 150MTR (OUTDOOR) TWIN
BEAM



JN-DCA-20

SOLAR POWERED
Point to Point 20M Infrared Photobeam,
Solar Powered, Wireless (433MHz)



JN-DCA-50

SOLAR POWERED
Point to Point 50M Infrared Photobeam,
Solar Powered, Wireless (433MHz)



JN-P01

SOLAR BOOST POWER SOURCE
FOR JN-DCA SERIES OF BEAMS



JN-RL-S

Solar Repeater for JN DC Beams
433MHz



MD2010

LOOP METAL DETECTOR
12-24VDC or 16-24VAC



CP2-100

CONTROL GROUND PROBE 6-31VAC
8-46VDC

8 - GLASSBREAK/SEISMIC DETECTORS



CRGB TESTER

GLASS BREAK TESTER



CRGBDII

GLASSBREAK / VIBRATION
DETECTOR



GM730

GM730 Seismic Detector (Direct
Replacement for GM530)



GMXP0

(277 273) Mounting Plate for
GM31/35/36



SWAN PGB

PET PIR SHOCK/GLASS BREAK
DETECTOR



NSP1

Vibration Analyzer, Requires 1 or more
VIB100 Sensors



VIB100

Nensensor Vibration Sensor.
Compatible with NSP1 & Elite panel
range



VIB-2000

Shock / Vibration Sensor 10-16V

9 - MICROWAVE DETECTORS

9 - MICROWAVE DETECTORS



SWAN 1000S

SWAN 1000 MICROWAVE/PIR 9.9GHz



SWAN 1000-O

SWAN 1000 OCCUPANCY SENSOR
microwave / PIR 10.525GHz with
occupancy feature for home automation



SWAN 2000AM

ANTIMASKING PET PIR &
MICROWAVE DETECTOR



EDS-2000 DUO

QUAD PIR AND MICROWAVE
OUTDOOR SENSOR



SRX360 X

X 10.525GHZ DUAL TECH 360
DEGREE PIR / MW DETECTOR

9 - MICROWAVE DETECTORS

10 - REED SWITCHES

10 - REED SWITCHES



132WH

SURFACE REED SW-SPDT-WHITE
130VDC 50mA max 19mm Gap Self
adhesive or screw



142SP

FLUSH REED SW-SPDT
130VDC 50mA 12mm Gap



220SP

STEEL DOOR CONTACT NC
130VDC 50mA 37mm Gap Dia.25mm

10 - REED SWITCHES



39RSP-WH

STND SURF CC CONTACT-WHITE
130VDC 50mA 25mm Gap



41SP-WH

SURF.CONTACT SPDT-WHITE
130VDC 50mA 30mm Gap



90SP

MINI-SURFACE REED SW
130VDC 50mA 15mm Gap



B-127

TAMPER SWITCH WHITE FOR PANEL



BP-30

SURFACE MOUNT REED SWITCH
Self 130VDC 50mA 19mm Gap
adhesive or screw



BP-33

HEAVY DUTY REED SWITCH 130VDC
50mA 57mm Gap



BP-50

FLUSH MOUNT REED SWITCH
130VDC 50mA 12mm Gap



400SP

FLUSH REED SWITCH
130VDC 50mA 50mm Gap



PP

29" X 15 " PRESSURE PAD (736mm x
381mm)



SP-3000A

Reed Switch Wide Gap Mini OHD
Contact 2.25" Gap Adjustable Magnet

11 - WIRELESS DETECTORS



TRX PIR

Low current 2-way wireless Swan quad element PIR detector fully supervised. Pet friendly.



DFW-915

PET FRIENDLY SUPERVISED
916.5MHZ WIRELESS PIR
(Freewave Protocol)
replacement for DMP-915



DFW-433

PET FRIENDLY SUPERVISED 433MHZ
WIRELESS PIR (Freewave
Protocol)
replacement for DMP-433



DFW-303

PET FRIENDLY SUPERVISED 303MHZ
WIRELESS PIR (Freewave
Protocol)
replacement for DMP-303



DMP-CHIME

BATTERY POWERED PIR WITH
BUZZER Fitted with a Curtain Lens
(DOOR MINDER)



FW-P3609F

FREEWAVE 360 WIRELESS
DETECTOR 915MHZ



TRX REED

2-way wireless reed switch for securing
doors and windows. Indicates open or
closed status to the control panel. Hard
wired input



FW-MAG9F

FREEWAVE 915MHZ RADIO REED SWITCH



FW-VIB9F

FREEWAVE VIBRATION SENSOR 915MHZ



JN-DCA-20

SOLAR POWERED

Point to Point 20M Infrared Photobeam, Solar Powered, Wireless (433MHz)



JN-DCA-50

SOLAR POWERED

Point to Point 50M Infrared Photobeam, Solar Powered, Wireless (433MHz)



JN-P01

SOLAR BOOST POWER SOURCE FOR JN-DCA SERIES OF BEAMS



TRX SMOKE

Photo electric 2-way wireless VST smoke detector, built in 85dB sounder



VST-FW-915

SUPERVISED 916.5Mhz, 9v Battery Operated Wireless Smoke Detector, Built in 85dB sounder (Supervised freewave Protocol)



VST-S588H-W

303Mhz, 9v Battery Operated Wireless Smoke Detector, Built in 85dB sounder (ness protocol)



VST-S588H-W-433

433Mhz, 9v Battery Operated Wireless Smoke Detector



TRX HEAT

2-Way Wireless Heat Detector 85Db
Built-in Sounder and Hush Button



VST-HEAT-303

Thermal Rate of Rise Wireless Heat
Detector 303Mhz



VST-HEAT-915

Thermal Rate of Rise Wireless Heat
Detector 915Mhz

12 - PENDANTS/TRANSMITTERS



TRX PENDANT

Hand held 4 button 2-way wireless
transmitter for arming disarming and
output control. Battery=1 x CR2032



TRX RM-KIT

2 x 4 Button TRX remotes and a TRX
TRANSCIEVER



RM-8003A

4 button black & chrome Remote
303.825Mhz (no cover)
ALSO AVAILABLE IN 915Mhz
RM-8003B
Batterys=3 x CR2016



RM-8003A KIT

2 x 4 Button 303Mhz remotes (no cover)
and a RX-16 MF349 (101 x 65 x 18)
ALSO AVAILABLE IN 915Mhz
RM-8003B KIT



RM-8006A

4 button black & chrome Remote
303.825Mhz (with slider)
ALSO AVAILABLE IN 915Mhz
RM-8006B
Batterys=3 x CR2016



RM-8006A KIT

2 x 4 Button 303Mhz remotes and a RX-16 MF349 (101 x 65 x 18)
ALSO AVAILABLE IN 915Mhz
RM-8006B KIT



RM-0001A

4 button black and chrome Remote
 434Mhz
 Battery=3 x CR2016



RM-0001A KIT

2 x 4 Button 433Mhz remotes and a RX-16 MF349



SX-TR04

303MHZ 4CH BLACK REMOTE
 PENDANT (CAN BE CODED ALIKE)
 Battery=1 x A27



SX-TR04/433

433MHZ 4CH BLUE SATIN FINISH
 PENDANT (CAN BE CODED ALIKE)
 Battery=1 x A27



CODING

Coding handheld remotes alike



FW-RMTB9F

FREEWAVE BLACK REMOTE 915MHZ



MEDI TX-303-SN

Water Proof Medical Transmitter in 303 Mhz, Comes as a kit with the options of either being used as an around the neck pendant, a Wrist Watch style or screwed to the wall on its clip base. (SN protocol)





MEDI TX-915-SN

Water Proof Medical Transmitter in 915 Mhz, Comes as a kit with the options of either being used as an around the neck pendant, a Wrist Watch style or screwed to the wall on its clip base. (SN protocol)



115-CHAIN

115 SILVER NECK CHAIN & KEY RING



SX-PD

WATERPROOF 304MHZ MEDICAL PENDANT (50 x 35 x 10)



TX-1/303

single button 303Mhz transmitter in IP65 box, with battery

TX-1/433

single button 433Mhz transmitter in IP65 box, with battery

TX-1/916.5

single button 916.5Mhz transmitter in IP65 box, with battery



TX-LIGHT/303

single channel 5-15 volt 303Mhz transmitter encased in plastic box with wire tales



TX-LIGHT/433

single channel 5-15 volt 433Mhz transmitter encased in plastic box with wire tales



TX-LIGHT/915

single channel 5-15 volt 915Mhz transmitter encased in plastic box , 3 Wire model, 2 modes Continuous or momentary transmission



TX-OCTA

8 CHANNEL 915Mhz, FIXED TRANSMITTED IN BOX (118 x 78 x 31)

13 - RADIO RECEIVERS AND DECODERS



RX-1 MF349

1-Channel Standalone Multi Frequency(303, 433 & 915MHz) Receiver 12-24V AC/DC, 20 radio slots Toggle or Momentary (101 x 65 x 18)



RX-2 MF349

2-Channel Standalone Multi Frequency(303, 433 & 915MHz) Receiver 12-24V AC/DC, 20 radio slots Toggle or Momentary (101 x 65 x 18)



RX-16 MF349

BUS CONTROLLED MULTI FREQUENCY 303, 433 & 915MHz RECEIVER (101 x 65 x 18)



TRX TRANSCEIVER

When hardwired to an Elite S series control panel this board will allow all these 2-way wireless products to control and be controlled by the panel.



ABS BOX

(CA1008)ABS RECEIVER BOX



RX-1 DECODER

1-Channel Standalone FW/MERLIN Decoder Receiver(303, 433 & 915MHz) Ideal for adding Wireless PIR/Reeds/Smokes to non AAP systems, batt low and tamper outputs, 12-24V AC/DC (101 x 65 x 18)



RX-DEC/FW-4

4-Channel version of RX-1 DECODER, 12VDC only, requires Bus Controlled Receiver(RX-16 series) 1 radio slot per channel



RX-DECODER

4-Channel Decoder, 12VDC only, requires Bus Controlled Receiver(RX-16 series) 1 radio slot per channel



RX-CHIME

Standalone Boxed Receiver with internal peizo sounder (external sounders can be added) NZ mains plug pack included



DESSPK

COMPACT DOOR CHIME SOUNDER PLUS 10MTR CABLE (plug and play ready for RX-CHIME)



RX-OCTA

2-Channel Standalone Receiver For RX-OCTA only. 915MHz, 12-24V AC/DC (101 x 65 x 18)

14 - ELSEMA

433MHz GIGALINK TX



GLT43301

1 CHANNEL 433MHZ HAND HELD
TRANSMITTER *9-volt battery included*



GLT43302

2 CHANNEL 433MHZ HAND HELD
TRANSMITTER *9-volt battery included*



GLT43303

3 CHANNEL 433MHZ GIGALINK
TRANSMITTER *9-volt battery included*



GLT43304

4 CHANNEL HAND HELD
TRANSMITTER *9-volt battery included*



GLT43308

8 CHANNEL GIGALINK 433MHZ
HANDHELD TRANSMITTER *9-volt
battery included*



GLT4330112E

1 CHANNEL FIXED TRANSMITTER



GLT4330812E

8 CHANNEL FIXED TRANSMITTER

433MHz GIGALINK RX



GLR43301

1 CHANNEL RECEIVER 433MHZ



GLR43301240

1 CHANNEL MAINS RECEIVER
433MHZ



GLR43302

2-CHANNEL 433MHZ GIGALINK
RECEIVER



GLR4330312

3 CHANNEL RECEIVER 433MHZ



GLR4330324

3 CHANNEL 433MHZ GIGALINK
RECEIVER



GLR4330412

4 CHANNEL 12V RECEIVER 433MHZ



GLR4330424

4 CHANNEL 24V RECEIVER 433MHZ



GLR43308 12R

8 CHANNEL 433MHZ GIGALINK RECEIVER WITH RELAY OUTPUTS

433MHz ANTENNA'S



ANT433S

433Mhz Antenna Standard 35cm Long with Cable and SMA Connector



ANT433M

94CM Long ANTENNA 433 MHZ - With SMA Connector

27MHz GIGALINK TX



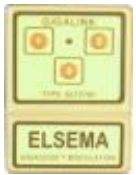
GLT2701

GIGALINK SINGLE CHANNEL HAND HELD TX WITH BATTERY *9-volt battery included*



GLT2702

ELSEMA GIGALINK 2 CH HAND HELD TX WITH BATTERY *9-volt battery included*



GLT2703

ELSEMA GIGALINK 3 CH HAND HELD TX WITH BATTERY *9-volt battery included*



GLT2704

GIGALINK 27MHZ 4 CHANNEL TRANSMITTER *9-volt battery included*



GLT2708

8 CHANNEL TRANSMITTER WITH CASE *9-volt battery included*



GLT271208E

8 CHANNEL GIGALINK TRANSMITTER WITH METAL CASE

27MHz GIGALINK RX



GLR271240

GL2701240 RECEIVER, 240V, 10A 1CH



GLR270412

4 CHANNEL 12V AC/DC GIGALINK 4 RELAY RECEIVER



GLR2704-24

GLR2704-24V GIGALINK 4 RELAY RECEIVER



GLR2708

GIGALINK 8 CHANNEL RECEIVER MODULE LONG RANGE

27MHz STANDARD TX/RX



FMT-401

27Mhz 1ch hand held transmitter High power (90 x 58 x 22)



FMT-402

27mHZ 2 BUTTON HIGH POWERED HAND HELD TX (90 x 58 x 22)



FMT-404

4 CHANNEL HIGH POWERED HAND CONTROLLER (90 x 58 x 22)



FMT-202DA

27M DUAL ACCESS 2 CH TX WITH BATTERY (91 x 58 x 22)



FMT-312E

27mHZ ELSEMA TRANSMITTER IN ALLOY CASE (132 x 61 x 36)



FMR-212T

27Mhz 10-28vAC/DC with timer controlled relay output



FMTR-2713E

12V 27mHZ ELSEMA REPEATER IN BOX (180 x 135 x 75)

27MHz ANTENNA'S



27M ANT

Std antenna assy for L/R TRANS or RX-27



27M ANT-H

HIGH GAIN 1 METER LONG 27MHZ WHIP ANTENNA



27M BASE

27M BASE+4MTR RG58CU+PL259
PLUG



27M BASE-ANT

27M ANTENNA BASE (BASE ONLY NO
CABLE)



27M-BKT

1.5MM Stainless Steel L Universal
Bracket

15 - MONITORING AND CELLULAR



CS-47NZ

CS47 Cellular Back up Unit - Telepermit
approved product (Vodafone or 2
Degree's only)



WT1020

WT1020 GSM Cellular Unit (Vodafone
or 2 Degree's only) Ideal for sites
without fixed telephone lines (NOT
FOR PHONE LINE BACK-UP USE)



RTU5015

Cellular Gate Opener. This unit can
have upto 64 phone numbers loaded
into memory, when a you call the
RTU5015 using caller ID the unit
confirms its an authorized number and
trigger its output. It also has 2 inputs that
can send SMS messages to 2 numbers.



ANT-GSM

824-960/1710-1990/2170Mhz antenna
w/ SMA Male R/A Dipole type



ANT-GSM WHIP

GSM antenna with SMA connector 850-
900Mhz



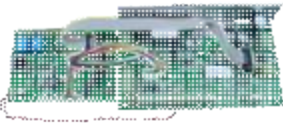
DSL008 2+ ADSL

Complete ADSL 2+ Line Filter (65 x 40 x
22)



IP-MODULE

Universal LAN to PSTN reporting module for monitoring over internet



IP-LOOM

Elite S to IP-Module connection cables, for IP control (setup requires advance IT knowledge)



DS1990A-F5

VIDEK READ ONLY I BUTTONS FOR PULSESTAR READER



PS-048

VIDEK PULSESTAR 48K READER

PSD-F00

VIDEK PULSESTAR TWIN DOWNLOADER CRADLE

16 - MEDICAL & EMERGENCY



MEDIVOX-9TX

Voice Recording Medical Alarm Dialler, Full Duplex 2 Way Voice, 915Mhz with MEDI TX-915-SN Pre Loaded



SX-PD

WATERPROOF 304MHZ MEDICAL PENDANT (50 x 35 x 10)



MEDI TX-303-SN

Water Proof Medical Transmitter in 303 Mhz, Comes as a kit with the options of either being used as an around the neck pendant, a Wrist Watch style or screwed to the wall on its clip base. (SN protocol)



MEDI TX-915-SN

Water Proof Medical Transmitter in 915 Mhz, Comes as a kit with the options of either being used as an around the neck pendant, a Wrist Watch style or screwed to the wall on its clip base. (SN protocol)



115-CHAIN

115 SILVER NECK CHAIN & KEY RING



MEDICO ADSL2 CABLE

ADSL FILTER TELEPHONE CABLE FOR MEDICO



MEDICO PLUGPACK

300MA AC PLUGPACK 15VAC



BT EXTENSION

100MM MALE - FEMALE Telecable EXTENSION



MEDICO TELECABLE

TELEPHONE CABLE FOR MEDICO 510/AP

17 - ACCESS CONTROL & INTERCOMS



CPT-DH16A-12DT

Standalone Outdoor Keypad IP65 Dual Voltage 12-24V, built in Prox Reader, 2 Output's, 1010 User Codes and/or Prox Tags, 2 REX Inputs, Backlight



CPT-DH16A-10T

Standalone Outdoor Keypad IP65 Dual Voltage 12-24V, built in Prox Reader, 2 Output's, 1010 User Codes and/or Prox Tags, 2 REX Inputs, Backlight (120x76x22)



DIGIRAD

Standalone Wireless 433MHz Keypad. Battery's included 2 x 1.5V-AAA, IP-54, 2-channels with 1 code each, (75 x 112 x 40) **requires radio receiver RX-2MF349 works great.**

AC2

2-DOOR STANDALONE ACCESS CONTROLLER, 12VDC only, 500 USER CODE SLOTS +500 PROX TAG SLOTS or 500 RADIO USER SLOTS with addition of a RX-16MF349 receiver Compatible with PW READER range



AC2 KIT

Access Control Kit
Includes:
1 x AC2 and 1 x PW READER-AAPNZ



AC2-LEAD

PRE-MADE PC SERIAL CABLE FOR
AC2 & RS-232 BD



PW READER

OUTDOOR ACCESS PROX READER
WITH OUT KEYS
Compatible with: Elite-S, Elite-S lite &
AC-2 (121 x 46 x 21)



PW READER 2

OUTDOOR ACCESS PROX READER
WITH 2-BUTTONS
Compatible with: Elite-S, Elite-S lite &
AC-2 (121 x 46 x 21)



PW READER-AAPNZ

OUTDOOR ACCESS PROX READER
WITH FULL KEYPAD
Compatible with: Elite-S, Elite-S lite &
AC-2 (121 x 46 x 21)



ACRYLIC PLATE

SMALL ACRYLIC PLATE FOR PW
READER 10MM LASER CUT BLK
For use when mounting a PW-Reader
on a Metal Surfaces



PROX CARD

PROX CARD
compatible with: PW READER range
and CPT-DH16A range
(86 x 54 x 1mm)



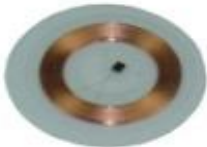
PROX EM4100

TUMBLER PROX KEYTAG GREY
compatible with: PW READER range
and CPT-DH16A range



PRESCO TAGS

PRESCO PROX KEY TAGS
compatible with: PW READER range
and CPT-DH16A range



EM4102

20mm CLEAR DISC PROX TAG
compatible with: PW READER range
and CPT-DH16A range
can be fitted in RM-8006 remotes



AT1-PCB

AT1 TIMER BOARD, 11 different timer
modes, 4 timing ranges, 1 second to 21
hours, 12-24V AC/DC operation, 10A
Relay output. (90 x 48 x 20)



AT1B

AT1 in ABS plastic Box



CPT595TS

AUDIO ONLY SAC5T-K1 gate stn &
MT9T-K1 Audio Handset 2 WIRE, SD5B
PSU 2-Wire Audio system + 2-Wire for
control



CPT0536SK

Audio only Kit SAC5T-K1 +MT361T-K1
h/free+SD5T (4-wire K1 Villa Series)



CPT-KIT-B3

Intercom Kit includes: 1 x 3" Small
Hands Free Colour Monitor(CPT-MON-
3), 1 x Champagne gate station with
colour camera(CPT-GATE-B) & 1 x Din
Rail Power. LCC dual gate station series
Supply



CPT-KIT-B6

Kit Includes: 1xMON-6(6.5"monitor),
1xGATE-B(champagne gate station) &
1xSD5B(din mount PSU) LCC



CPT-KIT-B7

Intercom Kit includes: 1 x 7" Large Hands Free Colour Monitor(CPT-MON-7), 1 x Champagne gate station with colour camera(CPT-GATE-B) & 1 x Din Rail Power. LCC dual gate station series Supply



CPT-KIT-A5

Intercom Kit includes: 1 x 6.5" Slim Hands Free Colour Monitor(CPT-MON-5), 1 x Keypad gate station with colour camera(CPT-GATE-A) & 1 x Din Rail Power Supply. LCC dual gate station series



CPT-KIT-A6

Kit Includes: 1xMON-6(6.5"monitor), 1xGATE-A(keypad gate station) & 1xSD5B(din mount PSU) LCC Series



CPT-KIT-A7

Intercom Kit includes: 1 x 7" Large Hands Free Colour Monitor(CPT-MON-5), 1 x Keypad gate station with colour camera(CPT-GATE-A) & 1 x Din Rail Power Supply. LCC dual gate station series



CPT-KIT-E7

Intercom Kit includes: 1 x 7" Large Hands Free Colour Monitor(CPT-MON-5), 1 x Stainless Steel Keypad gate station with colour camera(CPT-GATE-E) & 1 x Din Rail Power Supply. LCC dual gate station series



CPT-GATE-A

Silver Video & Audio Gate Station, with Backlit Access Control keypad built in for upto 40 users for LCC dual gate station series (180 x 76 x 60mm)



CPT-GATE-B

Champagne Video & Audio Gate Station, for LCC dual gate station series (130 x 50 x 40mm)



CPT-GATE-C

Silver Video & Audio Gate Station, for LCC dual gate station series (132x 95 x 45mm)



CPT-GATE-D

Stainless Steel Video Gate Station (LCC dual gate station series)



CPT-GATE-E

Brushed Steel Keypad Gate Station (LCC dual gate station series)



CPT-MON-0

Audio only Hands Free indoor intercom, for LCC dual gate station series (160 x 122 x 40mm)



CPT-MON-3

Small Indoor Monitor 3" TFT for LCC dual gate station series (190 x 112 x 42mm)



CPT-MON-5

Slim Indoor Monitor 6.5" TFT for LCC dual gate station series (220 x 110 x 29mm) *Also Available in Black*



CPT-MON-6

6.5" Low-Profile white Colour Hands-free Monitor 246x160x22mm (LCC dual gate station series)



CPT-MON-7

Large Indoor Monitor 7.0" TFT Silver for LCC dual gate station series (239 x 174 x 38mm)



CPT-SD5B

video intercom DIN RAIL PSU 230V, 14.5V 1300MA (87 x 89 x 61)



CPT-SD5T

audio only intercom DIN RAIL Power Supply 230V, 11-15V 200MA (87 x 89 x 61)



WELL-LPV-20-15

15V 1.3A Switch Mode Power Supply in IP67 Case, 100-240VAC Input (116x34x27mm) Ideal for powering CPT-MON 0-7 range



CPT-SAC550(C) CAT5

CAT5 SYSTEM GATE STATION
Stainless Steel, comes with flush fit box,
350mm x 150mm



CPT-HD3(B)-N

CAT5 NETWORK SYSTEM
CONTROLLER, with built in Power
supplys (230VAC to 2 x 12VDC 1Amp) 1
for the intercom system and 1 for the
Gate Lock. Battery backup ready.



CPT-HS8(2)B

CAT5 SYSTEM 2 USER
DISTRIBUTION MODULE



CPT-HS8 (CAT5)

CAT5 SYSTEM 4 USER
DISTRIBUTION MODULE



CPT-MT360-T

CAT5 SYSTEM AUDIO HANDS FREE
INDOOR STATION



CPT-MT320 (CAT5)

White CAT5 SYSTEM 6.5" TFT
MONITOR



CPT-MT320 (CAT5)B

Black CAT5 SYSTEM 6.5" TFT
MONITOR



CPT-TD3(B)-4F

CAT5 apartment system multi door
module up to 4 door stn



CPNT

WHITE EMERGENCY DOOR
RELEASE (87 x 87 x 54)

CPRG

CALLPOINT REPLACEMENT GLASS
(43 x 73 x 2)

DWS200

RESETTABLE GLASS BREAK WHITE



TR-EM REX

Emergency door release unit 9/16VDC



WEIGAND-IF

WEIGAND INTERFACE. Enables
Weigand Devices to work on the Elite S
panel range

ROM-SER2W

SCRAMBLER KP-WEIGAND OUTPUT



ROM-SMS2

CG1075 SURFACE MNT KIT for
codeguard KP

WES1910

SMALL STAINLESS STEEL PRESS TO
EXIT BUTTON FLUSH IP65
(N/O Contacts)

WEL1911

illuminated EXIT BUTTON FLUSH
MOMENTARY IP65 STAINLESS STEEL
(N/O and N/C Contacts) (70 x 115mm)



EB-02

Brushed stainless PRESS TO EXIT
BUTTON rectangle (N/O Contacts) (119
x 39 x 27)



WEL2220

STAINLESS STEEL EXIT BUTTON
WITH MUSHROOM GREEN PUSH
BUTTON (N/O and N/C Contacts)



TR-PROX REX

Touch sensitive exit push button unit
9/16VDC-50mA at 13.6 VDC



JDY-003

DROP BOLT SLIM CASE DOOR POS
O/P VARIABLE DROP TIM



YB-600

Drop Bolt Fail Secure with Key Override



YB-700A

Drop Bolt Fail Safe Slim DPS Timer



YB-700B

Drop Bolt Fail Secure Slim DPS Timer



YD-602

Wall Mount magnetic Door Holder with
100mm extension and release button



YD-603

Wall Mount magnetic Door Holder with
release button



YD-606

Floor Mount right angle magnetic Door Holder with release button



EML858

12v DC 280kg flush mount MAG CLAMP 234mX48.5mm



EML878

12/24vDC 500kg MAGCLAMP DPS



YM-500(LED)

Single Mag 1200lbs Bond Sensing



YM-500W

Single Mag 1200lbs Water Resistant



DSW-04A

ELECTRIC STRIKE LOCK FOR ALUMINIUM FRAME



DSW-05

ELECTRIC STRIKE FOR WOODEN FRAME



YS-138NC-S

ANSI Electric Strike Fail Safe DPS



YS-138NO-S

ANSI Electric Strike Fail Secure DPS



109

GROUND CATCH FOR VIRO LOCK



109A

SIDE MOUNT CATCH FOR VIRO LOCK



110D

Electric Gate Lock with double European cylinder



ABK-350L

L Bracket for 800kg Mag Lock Inward Opening



ABK-350UL

U Bracket for 800kg Mag Lock (Glass Door)



ABK350ZL

ZL Bracket for 800kg Mag Inward Door



ABK-500L

L Bracket for 1200kg Mag Lock Inward opening



ABK-500ZL

ZL Bracket for 1200lb Mag Inward Door



ABK-700

Drop Bolt Bracket For Glass Door (Frameless)



DWD30

CABLE PROTECTOR WITH PLASTIC ENDS S/S 6.2 DIAMETER 300MM LENGTH



DWM300

CABLE PROTECTOR WITH METAL BOXES S/S INNER DIA-8MM 300MM LENGTH

18 - GATE AUTOMATION



MAC

230VAC Actuator for Gates upto 3.5meters, NO limit switches, mechanical stop needed.
*Requires 202RR/C Controller



LOOK 352

230VAC Actuator for upto **2.5**meters Gates, Built in Limit Switches.
*Requires 202RR/C Controller



LOOK 358

230VAC Long Stroke Actuator for upto **3.8**meters Gates, Built in Limit Switches.
*Requires 202RR/C Controller
Must be used with a Lock



LOOK 372

24VDC Actuator for upto **2.5**meters Gates, Built in Limit Switches.
*Requires 224 Controller



LOOK 374

24VDC Long Stroke Actuator for upto **3.8**meters Gates, Built in Limit Switches.
*Requires 224 Controller
Must be used with a Lock



603

230VAC LINEAR GATE ACTUATOR, 2 WAY BLOCKING *Requires 202RR/C Controller



605

230VAC LONG STROKE ACTUATOR WITH BLOCKING
*Requires 202RR/C Controller



501

HINGED ARM GATE ACTUATOR WITH LIMIT SWITCHES (NO ARM)
*Requires 202RR/C Controller



501/24

500 SERIES ACTUATOR 24VDC WITH LIMIT SWITCHES (NO ARM)
*Requires 224 Controller



560A

DEA 500 SERIES ARTICULATED ALUMINIUM ARM



560BD

RIGHT HAND RAIL ARM FOR DEA 500
SERIES ACTUATORS



560BS

LEFT HAND RAIL ARM FOR DEA 500
SERIES ACTUATORS



403E

230VAC Sliding Gate Motor, with
built in Controller (400KG)



402/24

24VDC Sliding Gate Motor, with
Built in Controller (400KG)



801

230VAC Sliding Gate Motor, with
built in Controller (800KG)



18RR

230VAC OPERATOR FOR SLIDING
GATES UP TO 1500KGS
with built in controller



111

NYLON GEARED RACK FOR
401(1METRE)



113

STEEL GATE RACK X 1M



369

3M U-SECTION GATE TRACK FOR
SLIDING GATES



392080

80MM U-SECTION GATE WHEEL



392100L

100MM U-SECTION GATE WHEEL



202RR/C

230VAC DEA Gate Controller for single
and double actuators, with limit switch
inputs and smart motor drive



224

24VDC DEA Gate Controller for single
and double actuators, with limit switch
inputs and smart motor drive

19 - FIRE ACCESSORIES



VST-LS881AH

12V wired Smoke Alarm with Hush/Test
button, N/O contacts
*can be changed to N/C internally 85Db
sounder (dia.98 x 47mm)



TRX SMOKE

Photo electric 2-way wireless VST
smoke detector, built in 85dB sounder



VST-FW-915

SUPERVISED 916.5Mhz, 9v Battery Operated Wireless Smoke Detector, Built in 85dB sounder (Supervised freewave Protocol)



VST-S588H-W

303Mhz, 9v Battery Operated Wireless Smoke Detector, Built in 85dB sounder (ness protocol)



VST-S588H-W-433

433Mhz, 9v Battery Operated Wireless Smoke Detector, Built in 85dB sounder (ness protocol)



VST-S5981H

240V HARDWIRED SMOKE ALARM WITH 9V DC ALKALINE BATTERY BACK UP, BUILDT IN 85 Db SOUNDER (114 x 42)



VST-CONTROLLER

This Controller is Designed for the VST-S5981H 230v wired smoke detectors. Allowing multiply detectors to be wired together, giving a single relay output monitoring there activations



VST-MP01A

SURFACE MOUNT BASE FOR VST-S5981H



FMR-100

Flush Mount Ceiling Ring For NB338's & VST-LS881AH Smoke detectors



NB338-4ARB

RESETTING SMOKE DETECTOR + BUZZER (NO HUSH BUTTON)



TRX HEAT

2-Way Wireless Heat Detector 85Db Built-in Sounder and Hush Button



VST-HEAT-303

Thermal Rate of Rise Wireless Heat Detector 303Mhz



VST-HEAT-915

Thermal Rate of Rise Wireless Heat Detector 915Mhz



NB323

ROR Thermal Detector



NB338-4B

SMOKE DETECTOR LATCHING & BUZZER (NO HUSH BUTTON)



CPNT

WHITE EMERGENCY DOOR RELEASE (87 x 87 x 54)



CPRG

CALLPOINT REPLACEMENT GLASS (43 x 73 x 2)



DWS200

RESETTABLE GLASS BREAK WHITE



TR-EM REX

Emergency door release unit 9/16VDC



SM-200

AEROSOL SMOKE DETECTOR TEST CAN



YD-602

Wall Mount magnetic Door Holder with 100mm extension and release button



YD-603

Wall Mount magnetic Door Holder with release button



YD-606

Floor Mount right angle magnetic Door Holder with release button

20 - BATTERIES



DM12-1.3PP

POWERPAC 1.3AH 12V BATTERY
(100 x 45 x 52)



DM12-2

12V 2A/H POWER PAC BATTERY
170x60x35mm



DM12-3

3A/H 12V POWERPAC BATTERY SLA
(133 x 68 x 60)



DM12-5A/H

5A/H 12V BATTERY (90 X 101 X 70)



DM12-7.5

POWERPAC 7.5A/H 12V BATTERY
(150 x 65 x 95)



DM12-9

12V 9A/H BATTERY (150 x 65 x 95)



DM12-12

12V 12A/H BATTERY
(159 x 100 x 100)



DM12-18PP

12V 18A/H POWERPACK BATTERY
(180 x 75 x 165)

	DM12-40	12V 40A/H POWER PAC BATTERY H=175 W=195 D=165
	DM6V-1.3A	6V, 1.3AHR SLA BATTERY FOR SOLAR BELL (96 x 24 x 55)
	DM6-4	6V 4A/H POWER PAC BATTERY (46 x 70 x 105)
	DM6-5A	6V 5A/H POWER PAC BATTERY (46 x 70 x 105)
	DM6-12A	6V 12A BATTERY (150 x 50 x 100)
	3.6V	1/2 AA 3.6V LITHIUM BATTERY used in TRX Reed and FW-MAG
	CR-123AW	3V LITHIUM BATTERY USED IN TRX PIR'S, DFW PIR'S & DMP PIR'S
	ER26500	Li-SOCL2 Energy Type Cylindrical Battery used in TRX Keypad-B, TRX External, TRX Internal & TRX Output
	CR2016	LITHIUM BATTERY CR2016 3 VOLT 90M/AH (2 x in RM Pendant's)
	CR2032 CELL	CR2032 BUTTON CELL BATTERY used in TRX Pendant's

	CR2450	CR2450 Lithium Battery. used in TRX Keypad
	142-004	A23 12V Miniature Battery (10 x 28)
	A27	12V ALKALINE A27 BATTERY (8 X 28)
	142-006	9V BATTERY (48 x 26 x 18)
	142-007	9V LITHIUM BATTERY - Single Blister Pack (50 x 26 x 17)
	AAA-NIMH	AAA-NIMH Batteries With Tags as used in JNSTAR Beams
	AAA	AAA BATTERY (4-PACK)
	AA-4	AA BATTERY (4-PACK) GP Super Alkaline Blister Card Pack
	C-SIZE	C SIZE BATTERY (2-PACK) PANASONIC
	D-SIZE	D SIZE BATTERY (2-PACK) PANASONIC
	0	0

21 - CABLE

	4C2-100	4 CORE 0.2 TCCA/Box Centre Pull 100m rolls
	4C5-100	4 CORE 0.5 TCCA/Box Centre Pull 100m rolls
	4C5-300	4 CORE 0.5 TCCA/Box Centre Pull 300m rolls
	6C2-100	6 CORE 0.2 TCCA/Box Centre Pull 100m rolls
	6C5-100	6 CORE 0.5 TCCA/Box Centre Pull 100m rolls
	6C5-300	6 CORE 0.5 TCCA/Box Centre Pull 300m rolls
	RG59-T100	RG59 .81 Solid Copper Core/Foil & Braid shielding with twin power 100m reel, Use with <i>BNC CRIMP/M 0.9</i>
	RG59-T300	RG59 .81 Solid Copper Core/Foil & Braid shielding with twin power 300m reel, Use with <i>BNC CRIMP/M 0.9</i>
	RG6-T100	RG6 1.02 Solid Copper Core/Foil & Braid sheilding with twin power 100m reel, Use with <i>BNC CRIMP/M</i>
	RG6-T300	RG6 1.02 Soild Copper Core/Foil & Braid sheilding with twin power 300m reel, Use with <i>BNC CRIMP/M</i>

	RG59T-75	Premade Coax and Twin CCTV Cable Complete with Fittings - 23M/75'
	DC 2.1 SPLITTER	1 x 2.1mm DC socket in/4 x 2.1mm DC plugs out
	EC-1001	BNC MALE TO RCA FEMALE ADAPTOR (23 x 19)
	PA-3655	RCA PLUG TO BNC FEMALE
	EC-1007	F- Connector for RG58 or RG6 (20 x 11)
	EC-1008	DOUBLE BNC FEMALE CONNECTOR (33 x 12)
	EC-1009B	BNC MALE CRIMP (24 x 19)
	BNC CRIMP/M 0.9	BNC - RG59T crimp plug 0.9mm connector
	BNC CRIMP/M	BNC - RG6 crimp plug (centre pin 1.10 mm outer sheath is 6.9mm)
	VT-POWER 2.1M	2.1mm DC male plug/male DC terminal connector
	VT-POWER	2.1mm DC female to rising clamp terminal block connector

22 - CONTROL, RELAYS AND TIMERS



AT1-PCB

AT1 TIMER BOARD, 11 different timer modes, 4 timing ranges, 1 second to 21 hours, 12-24V AC/DC operation, 10A Relay output. (90 x 48 x 20)



AT1B

AT1 in ABS plastic Box



ELITE RTC

TIME CONTROLLER 8 TIME ZONES, 3 OUTPUTS +MUCH MORE



SP RELAY-1A

1 Amp SPDT Relay board this 12V coil (43 x 39 x 18)



SP RELAY-10A

10 Amp SPDT Relay board with 12V coil (43 x 39 x 25)



DP RELAY-5A

DPDT Relay with 5 Amp contacts and 12volt coil (43 x 39 x 25)



SP RELAY-AC

24V AC/DC TRIGGER RELAY SPDT 10 Amp Contacts (43 x 39 x 25)



DP RELAY-TRG

5 Amp DPDT 12 volt relay with low current pos/neg trigger input (43 x 39 x 25)



HS-RELAY

This High Current relay when triggered draws power from the Backup Battery, ideal for running big sirens off an alarm panel, without the need for an extra powersupply. (43 x 39 x 25)

23 - LENSES AND BRACKETS



SWAN QUAD LENS

LONG RANGE CURTAIN LENS FOR SWAN QUAD, DMP & DFW PIR'S



CRLND002

LONG RANGE LENS FOR D&D PIR



CRLND003

VERTICAL CURTAIN LENS FOR D&D



CRLNG002

LONG RANGE LENS FOR GENIUS 10



CRLNG003

VERTICAL CURTAIN LENS FOR GENIUS



CRLNL001

STANDARD LENS FOR MERLIN/LYNX PIR



CRLNL002

LONG RANGE LENS FOR MERLIN/LYNX PIR



CRLNL003

VERTICAL CURTAIN LENS FOR MERLIN/LYNX PIR



IRS112

IR100B CURTAIN MIRROR 20MTR



IRUM20

WALL MNT BRACKET IR110/120



SWAN BKT

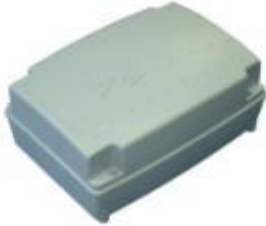
BRACKET ASSEMBLY FOR SWAN QUAD (0980530)

24 - PLASTIC ENCLOSURES



100G

PVC DEA BOX 265x180x95 IP55



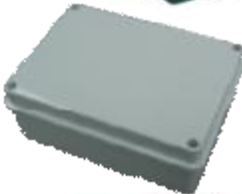
100GG

DEA PROTECTION BOX IP65 340 X 240 X 165 (LARGE)



ABS BOX

(CA1008)ABS RECEIVER BOX



PLAS BOX-L IP65

Grey Plastic box
110x150x70MM IP65 Rated
IDEAL FOR IP-MODULE



CRSHPW002

CROW PW-4/8 PLASTIC BOX



PLAS BOX-S

PLASTIC BOX 110x110x65MM IP55



PLAS BOX-L

PLASTIC BOX 110x150x75MM IP55



PLAS BOX-XL

PLASTIC BOX 150X220X100 IP55



PLAS BOX-XXL

PLASTIC BOX 220X300X100 IP55



PLAS BOX-XXXL

220x300x150mm IP55

25 - PLUG PACKS



PS12300EP

500MA 12V DC REGULATED PLUG PACK (WITH AUSTRALIA / NZ PLUG)



PS5500PP

Switch Mode Plug Pack for TRX 2-Way Wireless Range. 5.5Volt 500mA regulated, with 2.1mm DC plug on end



PS121000PP

SWITCH MODE PLUG PACK
12VDC 1A



PS124160

12V DC 4AMP SWITCH MODE IN-LINE POWER PACK



MEDICO PLUGPACK

300MA AC PLUGPACK 15VAC



TEPP16V

16V AC 1.5AMP PLUGPACK, can be used to power Elite Alarm system range.

26 - POWER SUPPLIES 12VDC



DC CONV

20V - 12V DC 250MA CONVERTER



DC CONV-3

Converter 18-30V AC/DC to 12VDC
1.25A (Yellow Wires =Input)



DC CONV-4

Converter 10-18V AC/DC to 12VDC
1.25A (Green Wires =Input)



DC CONV-5

Mini AC-DC Converter 16-28Vin to
12VDCout @500mA 74mm x40mm
x23mm



PSU1 LITE-R

BUDGET POWER SUPPLY 1AMP 13.8
VOLT MANUFACTURED PCB



PSU1R

PSU1 13.8V 1A MODULE ONLY,
(Requires 15-17VAC power source)



PSU1

13.8V 1A PLATED POWER SUPPLY,
Battery Charging (200 x 92 x 60)



PSU1B

13.8V 1A BOXED POWER SUPPLY,
Battery Charging (310 x 260 x 75)



PSU2

Budget 12V 2A Plated Power Supply,
with 5 x Fused Outlets, can be fitted in
an ELITE BOX *sold separately*



PSU3R

PSU3 POWER SUPPLY BOARD WITH
OUT TRANSFORMER (Requires 15-
17VAC power source)



PSU3

13.8V 3A POWER SUPPLY, Battery
Charging (200 x 92 x 60)

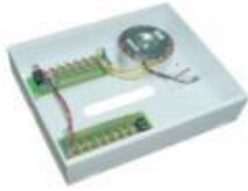


PSU4

13.8V 4.75A Plated Power Supply, with
battery charging and 5 x Fused Outlets

	PSU4B	13.8V 4A, Plus 2A Battery Charging Boxed Power Supply Switch Mode with 5 Fused Outlets and main & Battery Monitoring (310 x 260 x 75)
	PS5	12V 5A Plated Power Supply with Battery Backup and Mains & Battery Monitoring (excellent for 12 Volt Camera Systems)
	PS5B	PS5 Module in Metal Cabinet.
	PS18-12	12VDC 18AMP BOXED SUPPLY WITH 16FUSED OP, MAIN & FUSE FAIL OP (NON BATTERY CHARGING)
	MP3118	12VDC 18AMP CURRENT LIMITED SWITCH MODE POWER SUPPLY MODULE (230VAC INPUT)
	WELL-LPH-18-12	12V 1.5A Switch Mode Power Supply in IP67 Case, 230VAC Input (140x30x23mm)
	WELL-LPV-20-15	15V 1.3A Switch Mode Power Supply in IP67 Case, 100-240VAC Input (116x34x27mm)
	PS-RK FRONT	RACK MOUNT FRONT PANEL FOR PS24/AC-16 & PS18 (powersupply Not included)
	FUSE BD-KIT	2x8-WAY FUSE BD kit to fit PSU3B,PS24/3B.PS5B,PS5B-12
	FUSED BOARD-8	8-WAY FUSE BOARD (150 x 50 x 23)
	FUSED BD-BOXED	8-WAY FUSED BOARD IN PLAS BOX-L, IP-55

27 - POWER SUPPLIES 24VAC



PS24/AC-8

24V AC 8 AMP BOXED,
16 fused outlets (260x310x80mm)



PS24/AC-16

24VAC 16A POWER SUPPLY, 16
FUSED OUTLETS, MAINS & FUSE
FAIL OUTPUTS.



PS-RK FRONT

RACK MOUNT FRONT PANEL FOR
PS24/AC-16 & PS18
(powersupply Not included)

27 - POWER SUPPLIES 24VAC

27 - POWER SUPPLIES 24VAC

28 - POWER SUPPLIES 24VDC



PSU24/1.5

27.6V 1.5A PLATED POWER SUPPLY,
Battery Charging (200 x 92 x 60)



PSU24/1.5B

PSU 1 26.8V 1A BOXED POWER
SUPPLY, Battery Charging
(260 x 92 x 80)



PSU24/1.5R

PSU1 26.8V 1A MODULE ONLY
(Requires 25-27VAC power source)



PS24/3

PS24/3 26.8V 3A PLATED PLATINUM
SERIES PSU, Battery Charging, Main &
Battery Fail outputs.



PS24/3B

PS24/3 Module in Metal Cabinet



MP3114

24VDC 6.5AMP CURRENT LIMITED
SWITCH MODE POWER SUPPLY
MODULE (230VAC INPUT)



PS24/6.5B

24V 6.5AMP SUPPLY WITH FIRE
PANEL CONTROLLED O/PUT

28 - POWER SUPPLIES 24VDC

28 - POWER SUPPLIES 24VDC

29 - TOOLS

12" BELL

BES-BELL1412

Ø1/4" X 12" BELL HANGERS BITS



BES-BELL3812

Ø3/8" X 12" BELL HANGERS BITS

BES-BELL1212

Ø1/2" X 12" BELL HANGERS BITS

24" BELL

BES-BELL1424

Ø1/4" X 24" BELL HANGER'S BITS



BES-BELL3824

Ø3/8" X 24" BELL HANGER'S BITS

BES-BELL1224

Ø1/2" X 24" BELL HANGER'S BIT

BES-BELL5824

Ø5/8" X 24" BELL HANGER'S BITS

36" BELL

BES-BELL1436

Ø1/4" X 36" Bell Hangers Bit



BES-BELL3836

Ø3/8" X 36" Bell Hangers Bit

24" FLEX

BES-FLX1424

Ø1/4" X 24" HSS Flex Bit Piranhabit-High Speed Steel



BES-FLX3824

Ø3/8" X 24" HSS Flex Bit Piranhabit-High Speed Steel

BES-FLX1224

Ø1/2" X 24" HSS Flex Bit Piranhabit-High Speed Steel

36" FLEX

BES-FLX1436

Ø1/4" X 36" HSS Flex Bit Piranhabit-High Speed Steel



BES-FLX3836

Ø3/8" X 36" HSS FLEX BIT
PIRANHABIT-HIGH SPEED STEEL

BES-FLX1236

Ø1/2" X 36" HSS FLEX BIT
PIRANHABIT-HIGH SPEED STEEL

54" FLEX

BES-FLX1454

Ø1/4" X 54" HSS FLEX BIT
PIRANHABIT-HIGH SPEED STEEL



BES-FLX3854

Ø3/8" X 54" HSS FLEX BIT PIRANHABIT-
HIGH SPEED STEEL

BES-FLX1254

Ø1/2" X 54" HSS FLEX BIT
PIRANHABIT-HIGH SPEED STEEL

72" FLEX



BES-FLX3872

Ø3/8" X 72" HSS FLEXBIT

BES-FLX1272

Ø1/2" X 72" HSS FLEXBIT

BELL CARBIDE



BES-BELLC1236

Ø1/2" X 36" CARBIDE BELL
HANGER'S BITS

FLEX CARBIDE



BES-FLM1248

Ø1/2" X 48" CARBIDE FLEX BIT

BES-FLM1254

Ø1/2" X 54" CARBIDE FLEX BIT

FLEX AUGER



BES-QTT91648

Ø9/16" X 48" Auger Flex Bit Piranhabit
Auger

BES-AUG3872

Ø3/8" X 72" Auger Flex Bit Piranhabit
Auger



BES-FTR13

13' Telescoping Fiberglass Retriever



BES-GLF415

Single 3' 5/32" Fiberglass Glow Rod,
Male to Female threaded ends



BES-GLF410

Single 6' 5/32" Fiberglass Glow Rod,
Male to Female threaded ends



BES-FIB505

FISH HOOK (UNIVERSAL
ATTACHMENT FOR 3/16" & 5/32"
ROD)



BES-FIB518

PULL RING (UNIVERSAL
ATTACHMENT FOR 3/16" & 5/32")



BES-FIB522

WISP HEAD (UNIVERSAL
ATTACHMENT FOR 3/16" & 5/32")



BES-MAG6589

Magnafish in-wall wire pulling system



BES-WIM396

WRIST MAGNET



AG-T202

PAL CCTV TESTERS WITH
POWERPACK

CRGB TESTER

GLASS BREAK TESTER



LOE205/AU

GP HEADLAMP 0.5W LED, 55 hour run
time. 3 x AAA batteries included

TORCH LWE201

Weatherproof heavy duty ultrabright
LED Torch with 4 AAA batteries

CRIMP TOOL

Crimp Tool for Coax Cable



STRIPPING TOOL

Stripping Tool For Coax Cable



BEANIE GEL

Gel Filled Crimp Connector (Jar 200
pcs)

TAPE BLACK20M

BLACK INSULATION TAPE 20M



TAPE GREEN20M

GREEN INSULATION TAPE 20M



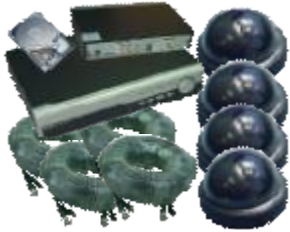
TAPE RED20M

RED INSULATION TAPE 20M



TAPE WHITE20M

WHITE INSULATION TAPE 20M



ITX DVR-4 ID KIT

4 CHANNEL ITX HI RES DVR with 500GB HDD, 4 x DN-D3.6 600TVL, 4 x 23mtr Pre-made RG59T cables, PS fused brake out and mouse



ITX DVR-4 OD KIT

4 CHANNEL ITX HI RES DVR with 500GB HDD, 4 x DNS DIR 3.6 domes, 4 x 23mtr Pre-made RG59T cables, PS fused brake out and mouse



DN-HD DVR COMBO OD/B

1 x DN-VDS1408HDD DVR with 2Tb Hdd and 2 x DN-BHD2812 HiDef IR Bullet camera's



DN-HD DVR COMBO OD/D

1 x DN-VDS1408HDD DVR with 2Tb Hdd and 2 x DN-DHD2812 HiDef Dome camera's



ITX DVR-4 STMHDD

4 Channel H264 High Res DVR 2CIF Playback, 500GB SATA HARD DRIVE, NETWORK, VGA, 2 x USB



ITX DVR-8HDD

8 CHANNEL DVR +1TB HARD DRIVER, Feature 2 x USB ports for mouse or video transfer, VGA output, H.264, Network,



ITX DVR-16HDD

ITX 16ch DVR ATM1624/H.264/ 1TB HDD/ DVD RW/200fps



DN-VDS1408HDD

Hybrid DVR, 4 x HD / 8 x SDI inputs with 2TB Black Series HDD



DN-HD1600SHDD

16 channel HD DVR 1080P at 5 FPS per channel with 2TB HDD



ITX HDI0412HDD

4 CH. HD-SDI DVR 30FPS @ 1080p per camera with 2tb Black Series HDD



ITX HDY1618HDD

Hybrid HD-SDI DVR 8 + 8 with 2TB Black series HDD



HUNTING CAM

IP65 covert Camera/DVR With Colour Screen and Battery Box PAL



HUNTING CAM MMS

IP54 covert HD Camera/DVR With Colour Screen and Battery Box Sends Image Via GSM Network



VF-5696

Weatherproof Dummy CCTV camera with blinking LED



DN-D3.6

600tvl 1/3 Next Chip indoor dome 3.6mm DWRD, OSD 12vDC, day night

	DN-DIR3.6	600tvl 1/3 next chip weatherproof dome, 3.6mm , DWDR, 12v DC day night
	DN-DIR8.0	600tvl 1/3 next chip weatherproof dome, 8.0mm , DWDR, 12v DC day night
	DN-DIR12	600tvl 1/3 next chip weatherproof dome, 12.0mm , DWDR, 12v DC day night
	DN-DIR2812	700tvl 1/3 Sony Efiio-E chip weatherproof dome, MEGA lens 2.8 - 12mm,WDR, 12vDC day night
	DN-DHD2812	Water/P no IR vandal dome, 12vDC, 2.1MP Full HD lens, 2.8-12mm V/F, WDR, OSD, CVBS output
	DN-BIR3.6	600tvl 1/3 Next Chip weatherproof bullet camera, 3.6mm , DWDR, 12v DC, day night
	DN-BIR8.0	600tvl 1/3 Next Chip weatherproof bullet camera, 8.0mm , DWDR, 12v DC, day night
	DN-BIR12	600tvl 1/3 Next Chip weatherproof bullet camera, 12.0mm , DWDR, 12v DC, day night
	DN-BIR6050	700tvl, 1/3 Sony Effio-E chip, weatherproof bullet 6-50mm Lens, WDR, 12vDC day night
	DN-BIR2812	OSD, 700tvl 1/3 Sony Efiio-E chip W/P bullet housing, MEGA lens 2.8 - 12mm, WDR, 12vDC N/D
	DN-BHD2812	Bullet camera weatherproof 2.1MP Full HD Lens, WDR 2.8-12mm varifocal, IR, OSD, CVBS O/P 12VDC
	DN-BHDPH	Pin Hole 2.1MP HD bullet camera weather resistant



F-FUM-980DS

COVERT SMOKE DETECTOR
CAMERA COLOUR 420TVL



SWAN CAM-PAL

PET PIR C/W COLOUR PINHOLE
CAMERA (123 x 60 x 38)



F-IR-30T

30 MTR INFRARED ILLUMINATOR
12VDC



F-IR-100T

100 MTR INFRARED ILLUMINATOR
230VAC or 12 VDC



LG-MONITOR

18.5"/47cm TFT LCD ANTI GLARE
1366x768 RES



LG-MONITOR HD

21.5" LED Monitor DVI+VGA 1920x1080



AVM-138NZ

RF TV Modulator with plug pack



F-FUM-T10

VIDEO SERVER F-FUM-T10III



VT-430AH

Hi-Performance Video Ground Loop
Isolator



F-FUM-T1

TWISTED PAIR TRANSMITTER



PS121000PP

SWITCH MODE PLUG PACK
12VDC 1A



PS124160

12V DC 4AMP SWITCH MODE IN-LINE POWER PACK



PS24/AC-8

24V AC 8 AMP BOXED, 16 fused outlets (260x310x80mm)



PS24/AC-16

24VAC 16A POWER SUPPLY, 16 FUSED OUTLETS, MAINS & FUSE FAIL OUTPUTS.



FUSED BOARD-8

8-WAY FUSE BOARD (150 x 50 x 23)



FUSED BD-BOXED

8-WAY FUSED BOARD IN PLAS BOX-L, IP-55



RG59T-75

Premade Coax and Twin CCTV Cable Complete with Fittings - 23M/75'



DC 2.1 SPLITTER

1 x 2.1mm DC socket in/4 x 2.1mm DC plugs out



CCTV SIGN-L

LARGE VIDEO WARNING SIGN (295 x 240mm)



CCTV SIGN-S

SMALL VIDEO WARNING SIGN (295 x 240mm)



CCTV STICKER

WARNING SURVEILLANCE CAMERAS STICKER



AAP DVR SELECTION

	ITX DVR-4 STM	ITX DVR-8	ITX DVR-16	DN-VDS1408	ITX HDY1618 (8+8)	ITX HDI0412	DN-HD1600S
HD SDI INPUTS (digital)	N/A	N/A	N/A	4 x HD (1080p)	8 x HD (1080p)	4 x HD (1080p)	16 x HD (1080p)
COMPOSITE INPUTS (analog)	4 x (576p)	8 x (576p)	16 x (576p)	8 x (576p)	8 x (576p)	N/A	N/A
FRAME RATE (Live view)	SD=52fps	SD=56fps	SD=112fps	HD=20fps, SD=200fps	HD=240fps, SD=240fps	HD=120fps	HD=400fps
FRAME RATE (Rec. @max. total)	SD=13fps@576	SD=7fps@576	SD=7fps@576	HD=6fps, SD=25fps	HD=60fps, SD=120fps	HD=120fps	HD=80fps
FRAME RATE (Rec. per Input)					HD=7fps, SD=15fps	HD=30fps	HD=5fps
INTERNAL STORAGE	1 x SATA	1 x SATA	2 x SATA	2+1* x SATA	2 x SATA	2 x SATA	2+2* x SATA
EXTERNAL STORAGE	NO	NO	NO	NO	1 x ESATA	1 x ESATA	1 x ESATA
CD/DVD-R DRIVE	NO	NO	1 (optional)	1* (optional)	1 (optional)	1 (optional)	1* (optional)
USB PORTS	1 x Front, 1 x Back	1 x Front, 1 x Back	2 x Front	1 x Front, 1 x Back	2 x Front, 1 x Back	2 x Front, 1 x Back	1 x Front, 1 x Back
RS-232	NO	NO	NO	YES	YES	YES	YES
RS-485	YES	YES	YES	YES	YES	YES	YES x 2
LAN/WAN	YES	YES	YES	YES	YES x 2	YES x 2	YES
HDMI	NO	NO	NO	NO	YES	YES	YES
DVI	NO	NO	YES	NO	NO	NO	NO
VGA	YES (1280x1024@60Hz)	YES (1280x1024@60Hz)	YES ¹ (1280x1024@60Hz)	YES (1024x768@60)	YES**	YES**	YES (1280x720@60Hz)
COMPOSITE OUT	YES	YES	YES	NO	NO	NO	NO
SPOT OUT	YES Composite	YES Composite	YES Composite	NO	YES HDMI	NO	NO
AUDIO IN	4	4	4	4	4	4	16
AUDIO OUT	1	1	1	1	1	1	1
ALARM INPUTS	4	4	4	8	4	4	16
RELAY OUTPUTS	1	1	1	4	2	2	4
Continuous Rec. Time@Max. Res							
500Gb Drive	130 hours	100 hours	50 hours	-	-	-	-
1Tb Drive	260 hours	200 hours	100 hours	-	-	-	-
2Tb Drive	520 hours	400 hours	200 hours	105 hours	85 hours	66 hours	72 hours
4Tb (2Tb+2Tb)	N/A	N/A	400 hours	210 hours	170 hours	132 hours	144 hours
6Tb (2Tb+2Tb+2Tb)	N/A	N/A	N/A	315 hours	N/A	N/A	216 hours
8Tb (2Tb+2Tb+2Tb+2Tb)	N/A	N/A	N/A	N/A	N/A	N/A	288 hours
Default Password	1234	1234	1234	1111	1234	1234	1111
TRADE +HDD	\$624 (500Gb)	\$813 (1Tb)	\$1159 (1Tb+DVD-R)	\$1699 (2Tb)	\$2850 (2Tb)	\$1850 (2Tb)	\$3995 (2Tb)

¹ = Requires DVI to VGA adapter
 * = HDD or CD/DVD Drive
 ** = only 1080p output, most basic monitors wont work

QCIF = 176 x 144 pixels
 CIF = 352 x 288 pixels
 2CIF = 704 x 288 pixels
 D1 = 720 x 576 pixels



Advanced Alarm Protection IPM

AAP CAMERA SELECTION

DN-BIR (3.6, 8, 12)	DN-BIR5050	DN-BIR2812	DN-BHD2812	DN-D3.6	DN-DIR (3.6, 8, 12)	DN-DIR2812	DN-DHD2812
YES	YES	YES	YES	YES	YES	YES	YES
600TVL	700TVL	700TVL	1100TVL	600TVL	600TVL	700TVL	1100TVL
Fixed	Varifocal	Varifocal	Varifocal, ICR	Fixed	Fixed	Varifocal	Varifocal, ICR
3.6mm - 8mm 65° - 32° - 21°	6mm - 50mm 40° - 12°	2.8 - 12mm 78° - 30°	2.8 - 12mm 90° - 34°	3.6mm 65°	3.6mm - 8mm 65° - 32° - 21°	2.8 - 12mm 78° - 30°	2.8 - 12mm 90° - 34°
24	36	36	36	24	24	30	NO
12VDC	12VDC	12VDC	12VDC	12VDC	12VDC	12VDC	12VDC
80mA	200mA	80mA	200mA	80mA	80mA	80mA	200mA
200mA	500mA	250mA	300mA	N/A	250mA	250A	N/A
Auto/Colour/BW/EXT ON/OFF selectable	Auto/Colour/BW	Auto/Colour/BW	Auto/Colour/BW Off/BLC/WDR	Auto/Colour/BW/EXT	Auto/Colour/BW/EXT ON/OFF selectable	Auto/Colour/BW	Auto/Colour/BW Off/BLC/WDR
NO	YES	NO	YES	NO	NO	NO	YES

TRADE PRICE \$125 \$495 \$230 \$595 \$79 \$125 \$230 \$479



